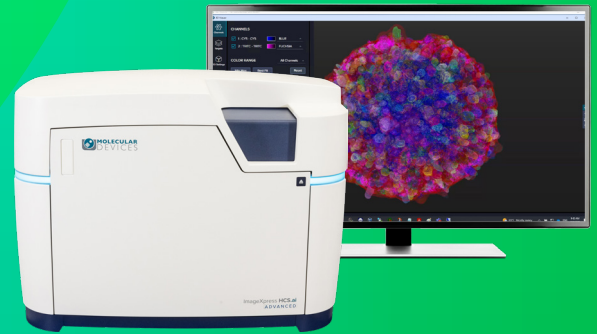


ImageXpress HCS.ai Advanced System

Speed without compromise.
Insight without delay.



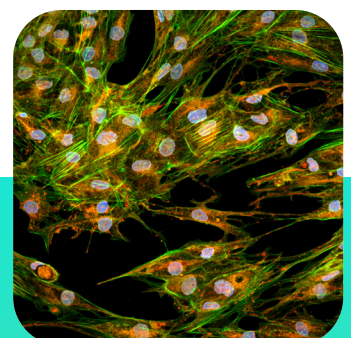
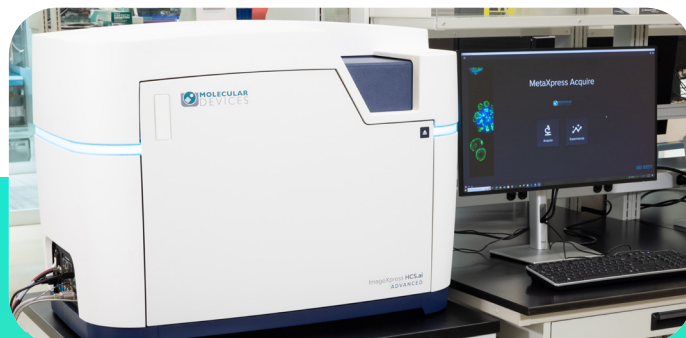
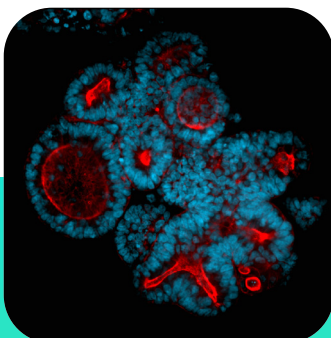
Engineered for pharmaceutical and biotech teams processing massive datasets across large, multiplexed screens

Why ImageXpress HCS.ai Advanced System for biopharma?

Biopharma high-content screening teams must process thousands of wells per day, manage massive datasets with minimal intervention, and maintain strict uptime while integrating with automation and enterprise systems. They also face workflow bottlenecks, including slow acquisition, manual analysis delays, data-hand off friction, and risks to image quality and reproducibility—especially during high-volume campaigns.

The ImageXpress™ HCS.ai High-Content Screening Advanced System is purpose-built to support complex, high-volume screening environments, from primary assays through advanced phenotypic profiling. With seamless integration into automated workflows and enterprise informatics ecosystems, it helps global teams generate consistent, decision-ready data that drives programs forward with clarity and control.

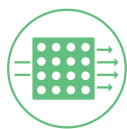
*Request a personalized demo and receive up to 25% discount**



**Power to discover.
Performance to deliver.**

The ImageXpress HCS.ai Advanced System delivers automation-ready, high-throughput imaging with exceptional image quality and integrated IN Carta® Image Analysis Software, accelerating screening workflows and empowering a rapid path to discovery without compromise.

Key benefits for biopharma screening



Built for high throughput screening

Engineered for biopharma-scale compound library processing, the system enables optimized acquisition and reproducible analysis of large multiparametric datasets, allowing teams to process thousands of wells per day with confidence.

What this means: **Run large-scale screens faster, with fewer slowdowns and no sacrifice in data quality.**



Automation ready architecture for end-to-end screening

Designed with an automation-ready hardware layout and external control API, the system integrates seamlessly with robotics, scheduling, and informatics platforms, supporting unified Acquire → Analyze → Export workflows across LIMS and enterprise data systems.

What this means: **High-throughput pipelines stay automated, low touch, and reproducible across sites and teams.**



Exceptional image quality at high speed

High-sensitivity optics, water immersion objectives, enhanced illumination, and a high-performance camera, combined with a larger field of view and optimized autofocus, maintain image clarity during rapid 2D and 3D acquisition and across demanding phenotypic screens.

What this means: **You achieve both speed and uncompromised image fidelity, critical for high confidence hit triage.**



Rapid AI-driven insights with integrated IN Carta Image Analysis Software

Machine learning-driven segmentation and phenotypic classification enable rapid multiparametric profiling, helping teams move seamlessly from image capture to analysis to decision-making while reducing manual effort, supporting large-scale screens, and ensuring accurate, consistent data export to informatics systems.

What this means: **Biopharma teams reach mechanism level insight faster, with fully reproducible analysis across sites.**



Greater reliability & reduced operational risk

High uptime and validated workflows reduce operational and compliance risk in regulated labs while delivering stable performance across extended screening programs and ensuring reproducible results across runs, teams, and global sites.

What this means: **Confidence in every run, critical for biopharma environments where failures have high cost.**



Accelerate discovery at scale with automation-ready, high-throughput imaging and AI-driven analysis. **Request a demonstration or workflow consultation today.**

*Promotion Terms and Conditions

The purchase order must reference the promotion code **EU-HCS.ai-Promo20-0726**. The offer is to purchase the ImageXpress® HCS.ai High-Content Screening System for up to 25% off the list price. Valid until **July 31, 2026**. The offer does not include shipping and handling, installation or training. The offer does not include any other options or accessories. This promotion cannot be combined with any other promotions or discounts. No substitutions or swaps. The discount is not convertible to cash. Promotion is not valid for standing orders. All prices exclude delivery charges and local taxes, which are the customer's responsibility. Purchase orders must be received by July 31, 2026, and delivery completed by August 21, 2026. This offer is valid only to customers in Europe when buying directly from Molecular Devices. Commercial organisations are excluded from this offer. Delivery terms are FCA (Free Carrier) and the seller's shipping facility (Incoterms 2010). Offer void where prohibited. All Molecular Devices products are for research use only. Other restrictions may apply. For our full standard terms and conditions of sale, please visit <https://www.moleculardevices.com/terms-and-conditions>.

Contact Us

Phone: 00800.665.32860
Web: www.moleculardevices.com
de.moleculardevices.com
es.moleculardevices.com
fr.moleculardevices.com
it.moleculardevices.com
Email: infoboxeu@moldev.com

Regional Offices

USA and Canada	+1.800.635.5577	Taiwan/Hong Kong	+886.2.2656.7585
United Kingdom	+44.118.944.8000	Japan	+81.3.6362.9109
Europe*	00800.665.32860	South Korea	+82.2.3471.9531
China	+86.4008203586	India	+1.800.266.5338

*Austria, Belgium, Denmark, Finland, France, Germany, Iceland, Ireland, Italy, Luxembourg, Netherlands, Norway, Portugal, Spain, Sweden, Switzerland and United Kingdom

Check our website for a current listing of worldwide distributors.

